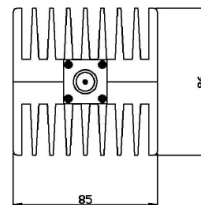
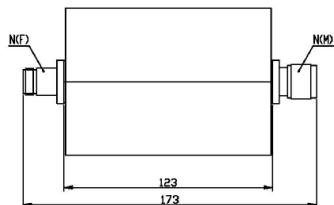
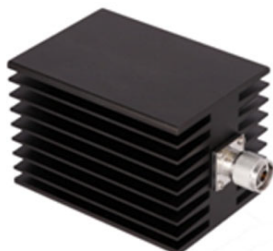


150W FIXED ATTENUATOR DC-10GHz

Model: WDTS-150W-10GHz-XX DC-10.0GHz 150Watts



Coaxial fixed attenuators are used in absorbing energy of transmission line, expanding power range and controlling power level, they are also used in accurately measuring power or spectrum of RF microwave transmitters accompany with small power meter, comprehensive tester or spectrum analyzer.

WDTS serial coaxial fixed attenuators' average power 1W-10KW, frequency range DC-26.5GHz and feature wide frequency band, low VSWR, flatness attenuation value, excellent capacity in anti-pulse and anti-burnout

MECHANICAL SPECIFICATIONS	
CONNECTORS	Brass Nickel Plated
PIN	Beryllium copper Gold Plate
HOUSING	Aluminium
INSULATOR	PTFE Virgin Electrical Grade
OPERATING TEMP.	-55° C to +125° C
Dimensions (mm)	173 x85 x86mm
WEIGHT kg	1.5kg

RoHS compliant: Yes

ELECTRICAL SPECIFICATIONS

Model	Frequency Range (GHz)	Attenuation & Accuracy (dB)					Power AVG(W)	Max VSWR
		3/6	10	20	30	40		
WDTS-150W-4GHz-XX	DC-4	±0.6	±0.5	±0.5	±0.5	±0.5	150	≤1.20
WDTS-150W-6GHz-XX	DC-6	±0.8	±0.8	±0.75	±0.75	±0.75		≤1.30
WDTS-150W-8GHz-XX	DC-8	/	/	±1.0	±0.75	±0.75		≤1.35
WDTS-150W-10GHz-XX	DC-10	/	/	/	±0.8	±0.8		≤1.40

Nominal impedance: 50Ω

AVERAGE POWER: 150W average to 25°C ambient temperature, derated linearly to 15W @125°C

PEAK POWER: 5kW (5μs pulse width 3% duty cycle)

CONNECTOR TYPE: N male (input) / N female (output)

Notes:

- 1) Dimensions Tolerance ±5%
- 2) Dimension and specifications refer to connector type N unless otherwise specified
- 3) Customer designs available for other special attenuators value and accuracy