

# Flexiform 405 HFJ

Premium re-formable coax, LSZH sheath

-40°C/+80°C

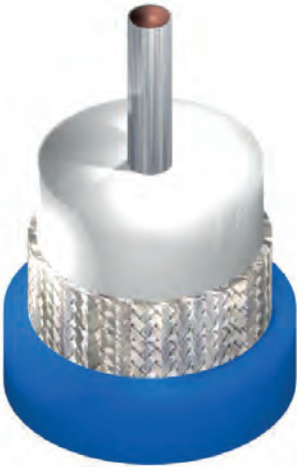
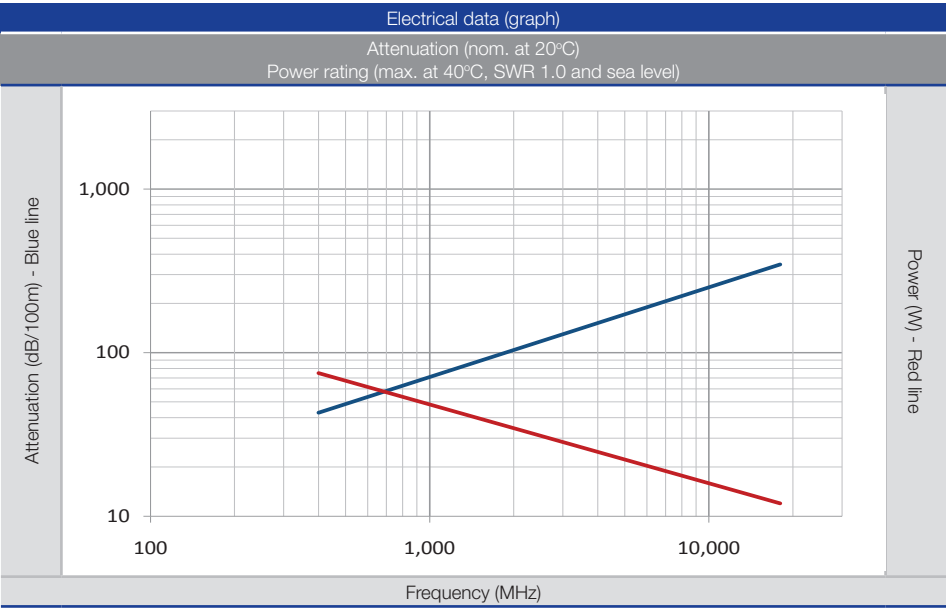
Construction

Conductor	Silver Plated Copper Covered Steel (SCCS) Silver Plated Copper (SPC)	Dielectric	PTFE	Frequency range	Up to 18 GHz
Screen	Tin-soaked, Tin Plated Copper (T)	Sheath	HFS 80 T	Vp	71%
Colour code	Natural			Sheath	Blue
Marking	Habia Cable - Type - Article Number - Year-Week - Batchcode e.g.: Habia Cable - Flexiform 405 HFJ - 3140040502 - 2015-W14 - 152011001				

Description	Construction						Electrical			MBR	Article Number
	conductor material	conductor Ø	dielectric Ø	shield/s Ø	sheath/s Ø	weight g/m	V AC rms	imp. Ω	cap. pF/m	installed	
Flexiform 405 HFJ	SCCS	0.53	1.65	2.15	3.20	23	1,500	50	94	6	3100040502
Flexiform 405 NM HFJ	SPC	0.54	1.68								3100040505

Electrical data		
Frequency (MHz)	Attenuation (dB/100m)	Power (W)
400	43	75
1,000	70	47
2,000	102	34
3,000	131	28
4,000	153	25
5,000	172	22
6,000	190	20
10,000	249	16
18,000	346	12

Attenuation data at 20°C  
Power data at 40°C



Application

A reformable alternative to semi-rigid coaxes, Flexiform is the original, premium spec. coaxial to offer the unique ability to be hand-formed with no special tooling required. The tin-soaked braid offers outstanding shielding properties whilst the non-magnetic conductor improves performance with regard to Passive Inter-Modulation (PIM). The flame retardant, Low Smoke Zero Halogen (LSZH) sheath enables use in a wide variety of applications. A standard specification version (Flexiform X HFJ) is also available.

- Flame retardant: IEC 60332-1-2
- Smoke generation: IEC 61034-2
- Screening efficiency: 110dB
- Variant designs available